

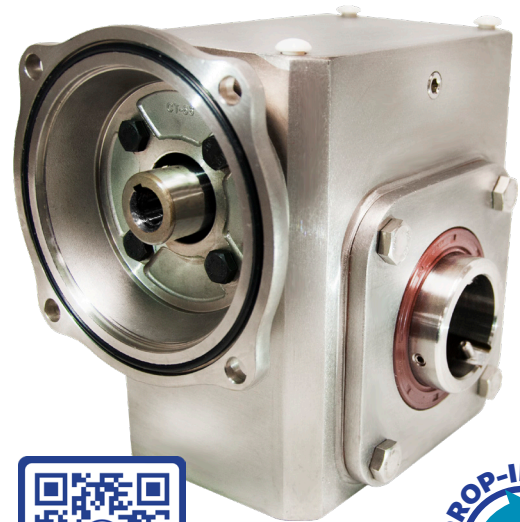
Stainless Steel Worm Gear Reducer

SSHDR Series

Heavy-duty speed reduction for corrosive environments



The WorldWide Electric Stainless Steel (SSHdR) series of heavy duty, right angle worm gear reducers offer exceptional value for applications where food-grade or corrosion resistant equipment is required. These BEAG/BISSC Certified reducers offer IP69K Protection for close-range high pressure, high temperature spray downs. The SSHdR series features a flange input/hollow bore output design with hollow output bore sizes ranging from 1" to 2³/₁₆" and center distances ranging from 1.75" to 3.25". Bushing kits are sold separately to allow for a greater number of head shaft size configurations.



MORE INFO



Quick Specs & Features

- Housing: 304 Stainless Steel
- Covers and Flanges: 304 Stainless Steel
- Input Compatibility: 56C, 143TC, 145TC
- Center Distance: 1.75 - 3.25 inches
- Speed Ratio: 5:1 - 100:1
- One-year Warranty



Responsive

Service & Technical Support



Quality Products

Competitive Pricing



In Stock Availability

Warehouses Nationwide



Fast Shipping

Same-Day Available

Product Features

- 304 stainless steel housing, covers and flange
- BEAG/BISSC Certified
- IP69K for protection against close-range high pressure, high temperature spray downs
- Magnetic hardware allows detection by metal detection devices to prevent contamination
- Double-lipped VITON oil seals (at output)
- Smooth, polished surfaces and etched nameplate
- Internal bladder functions as a breather and effectively dispels heat
- 15CrMo4 NEMA quill input with carburizing heat treatment
- CuSn12Ni2 bronze alloy worm wheel with high efficiency gear tooth configuration
- RoHS plastic covers supplied to fill unused mounting slots
- O-Ring on input flange to prevent moisture intrusion
- Performance equivalent to other major brands
- Units filled with Mobil CIBUS 460 H1 food-grade lubricant for Position A mounting. Other positions may require additional or subtraction of oil

Stainless Steel Bushing Kits

Stainless Steel HDR Reducers are only offered in the maximum output bore. Stainless steel bushing kits can be used to adjust the output bore size of your SSHDR.

- Bushing outer diameters (OD) from 1" - 2 $\frac{3}{16}$ "
- Bushing inner diameters (ID) from $\frac{5}{8}$ " - 2"



Model Number Selection

Sample Part Number: SSHDR206-10/1-H-56C-1.716

Each model number contains the product family, center distance, nominal ratio, motor frame, and maximum bore size. When selecting ratio, replace colon with slash, e.g. 10:1 becomes 10/1. When selecting center distance, remove the decimal point

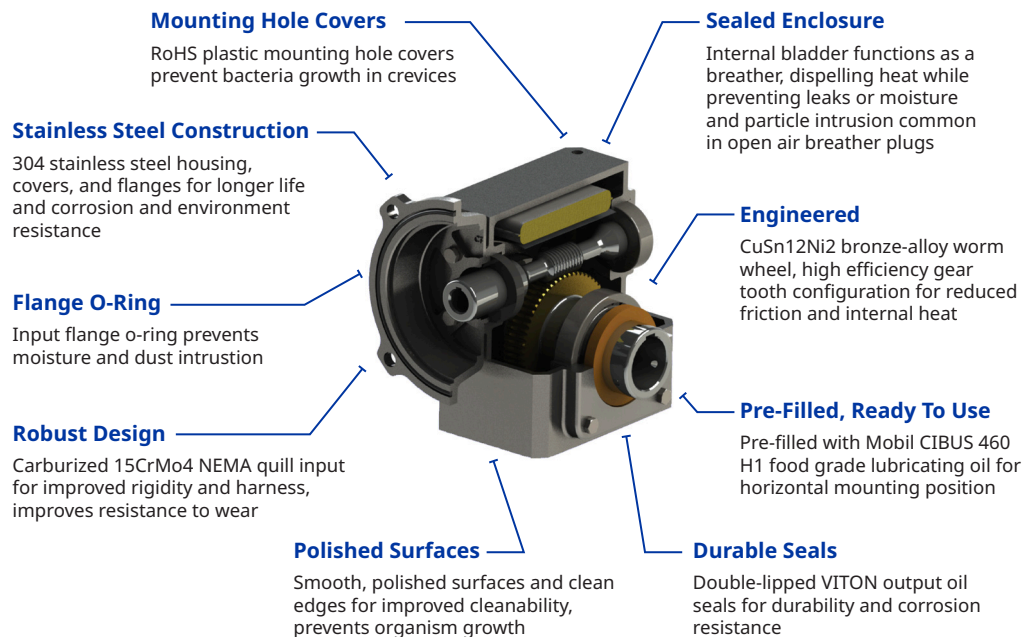
‡ Not all combinations indicated by this table are possible. Please contact us or visit shop.worldwideelectric.com for more information on availability.

Center Distance	Speed Ratio			Motor Frame	Max. Bore Size
1.75"	5:1 10:1 15:1	20:1 30:1 40:1	50:1 60:1	56C	1"
2.06"	5:1 10:1 15:1	30:1 40:1 50:1	60:1 80:1 100:1	56C	1.716"
2.37"	20:1				
2.62"	20:1 30:1 40:1	50:1 60:1	80:1 100:1	56C	1.1516"
	5:1 10:1	15:1 20:1	30:1	145TC	
3.25"	5:1 10:1 20:1	30:1 40:1 50:1	60:1 100:1	56C	2.316"
				145TC	
			80:1	143TC	

Additional Accessories

- Single Output Shaft Kit: Includes single output shaft, keys, end plate and bolt
- Double Output Shaft Kit: Includes double output shaft, keys, retaining rings and C-clips

Product Overview



WorldWide Electric Corporation is a leading manufacturer of electric motors, motor controls, gear reducers, and generators. Offering fast, often same-day, shipping from seven regional US warehouses, WorldWide Electric takes pride in providing a competitive edge to our customers by responding to their requirements with urgency, technical expertise, and professionalism.

© Copyright 2023 WorldWide Electric Corporation

GR-SSHDR-v05-19-23