



Parallel Shaft Helical Gear Reducers

FHN Series with Integrated Power Lock

Universal compatibility with NEMA C-face motors, a hollow bore output, and a broad range of power and output torques support many industrial process applications.

The WorldWide Electric FHN Parallel Shaft Helical Speed Reducers use a helical gear design to reduce output speed (RPM) and increase torque for your applications, such as driving belt, screw and chain conveyors, presses, extruders, and gantry cranes.

Power Lock & Retrofit Benefits — The power lock provides a more secure connection, removes the need for key alignment, reduces seizing and simplifies installation and removal. The NEMA quill input design allows you to replace a motor or gear reducer separately if either fails. The modular design allows drop-in replacement for most European-produced parallel speed reducers. The hollow bore allows direct connection to the shaft so a coupling is not required.

Efficient, Strong, and Low Noise — All housings are cast iron for increased strength and reliability. Precision machined, 20rMo alloy steel gears reduce stress and corrosion while providing efficient rotation and quieter operation. Heat-treated pinions and shafts provide durability.



Quick Specs & Features

- Ratios: 5:1 – 110:1
- Box Sizes: 87 – 97
- Horsepower Range: ¼ hp to 25 hp
- Housing: FCD45 Cast Iron
- Two-year Warranty



Responsive

Service & Technical Support



Quality Products

Competitive Pricing



In Stock Availability

Warehouses Nationwide



Fast Shipping

Same-Day Available

Product Features

- All cast iron housing for unquestioned strength and reliability
- Precision machined gears for quieter operation and superior strength
- Flanges designed to accept NEMA C-face motors
- Drop-in compatibility with most major European-produced reducer brands
- Power lock bushing included
- Embedded, double-lipped seals on shafts and hubs keep oil in and contaminants out.
- Pre-filled with HD320 Mineral Oil for M1 mounting position

Output Options and Accessories



Model Number Selection

Sample Part Number: FHN87-45/1-182T/4TC-PL

Each model number contains the product family, box size, nominal ratio, motor frame, and power lock. When selecting ratio, replace colon with slash, e.g. 10:1 becomes 10/1.

Product Family	Box Size	Nominal Ratio	Motor Frame	Power Lock
FHN	87	7:1	145TC	PL
	97	7.5:1	182TC	
		10:1	182/4TC	
		15:1	213/5TC	
		20:1	254TC	
		30:1	254/6TC	
		45:1	284TC	
		50:1		
		60:1		
		65:1		
		70:1		
		80:1		
		100:1		
		110:1		

Product Overview

Solid Construction

All cast iron FCD-45 housing.

Durable

A.G.M.A. 11 & 12 treated, SCM415 pinion gears.

Smooth

Gears supported by generously sized precision ball and tapered bearings.

Ships Ready

Pre-filled with HD320 mineral oil for M1 mounting position.

Sealed Enclosure

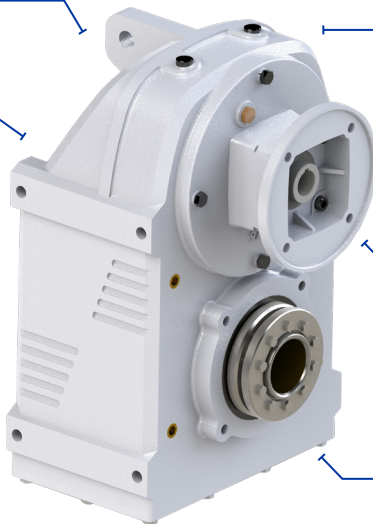
Embedded, double-lipped seals on shafts and hubs keep oil in and contaminants out.

Adaptable

NEMA quill input supports standard C-face motors.

Power Lock

Removes the need for key alignment, reduces seizing and simplifies installation and removal.



WorldWide Electric Corporation is a leading manufacturer of electric motors, motor controls, gear reducers, and generators. Offering fast, often same-day, shipping from seven regional US warehouses, WorldWide Electric takes pride in providing a competitive edge to our customers by responding to their requirements with urgency, technical expertise, and professionalism.

© Copyright 2023 WorldWide Electric Corporation

GR-FHN-PL-v05-19-23