

# Parallel Shaft Helical Gear Reducers

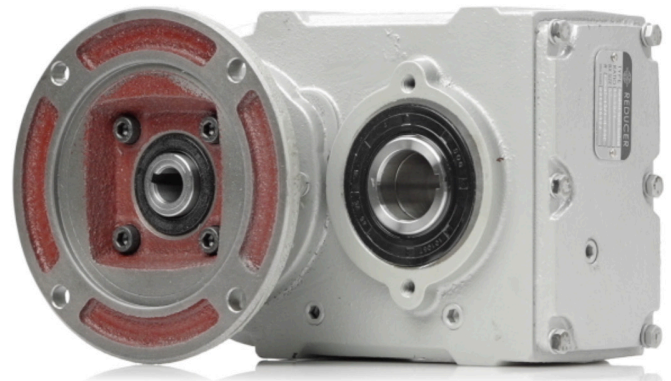
## FHN Series

Universal compatibility with NEMA C-face motors, a hollow bore output, and a broad range of power and output torques support many industrial process applications.

The WorldWide Electric FHN Parallel Shaft Helical Speed Reducers reduce output speed (RPM) and increase torque. The helical gear design provides high efficiency for your applications, such as driving belt, screw and chain conveyors, presses, extruders, and gantry cranes.

**Modular Design, Simplified Retrofitting** — The NEMA quill input design allows you to replace a motor or gear reducer separately if either fails. The modular design allows drop-in replacement for most European-produced parallel speed reducers. The hollow bore allows direct connection to the shaft so a coupling is not required.

**Efficient, Strong, and Low Noise** — All housings are cast iron for increased strength and reliability. Precision machined, 20rMo alloy steel gears reduce stress and corrosion while providing efficient rotation and quieter operation. Heat-treated pinions and shafts provide durability.



## Quick Specs & Features

- Ratios: 4:1 – 110:1
- Box Sizes: 37 – 97
- Horsepower Range: ¼ hp to 25 hp
- Housing: FCD45 Cast Iron
- Two-year Warranty



**Responsive**  
Service & Technical Support



**Quality Products**  
Competitive Pricing



**In Stock Availability**  
Warehouses Nationwide



**Fast Shipping**  
Same-Day Available

## Product Features

- All cast iron housing for unquestioned strength and reliability
- Precision machined gears for quieter operation and superior strength
- Flanges designed to accept NEMA C-face motors
- Drop-in compatibility with most major European-produced reducer brands
- Embedded, double-lipped seals on shafts and hubs keep oil in and contaminants out.
- Pre-filled with HD320 Mineral Oil for M1 mounting position

## Product Overview

### Solid Construction

All cast iron FCD-45 housing.

### Durable

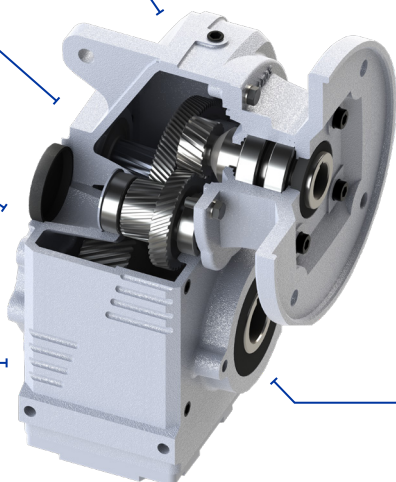
A.G.M.A. 11 & 12 treated, SCM415 pinion gears.

### Smooth

Gears supported by generously sized precision ball and tapered bearings.

### Ships Ready

Pre-filled with HD320 mineral oil for M1 mounting position.



## Model Number Selection

### Sample Part Number: FHN67-40/1-182TC

Each model number contains the product family, box size, nominal ratio, and motor frame. When selecting ratio, replace colon with slash, e.g. 10:1 becomes 10/1.

Product Family	Box Size	Nominal Ratio	Motor Frame
FHN	37	5:1	56C
	47	6:1	143TC
	67	7:1	143/5TC
	77	7.5:1	145TC
	87	10:1	182TC
	97	15:1	182/4TC
		20:1	213TC
		30:1	213/5TC
		40:1	254TC
		45:1	254/6TC
		50:1	284TC
		60:1	284/6TC
		65:1	
		70:1	
		80:1	
	85:1		
	90:1		
	95:1		
	100:1		
	110:1		




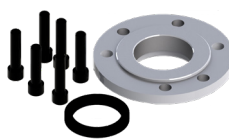

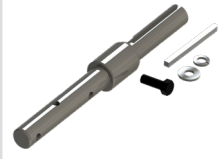
### Adaptable

NEMA quill input supports standard C-face motors.

### Sealed Enclosure

Embedded, double-lipped seals on shafts and hubs keep oil in and contaminants out.

## Output Options and Accessories

 <p>Single Output Shaft</p>	 <p>Single Output Shaft for B5 Flange</p>	 <p>B5 Output Flange</p>	 <p>B14 Output Flange</p>	 <p>Screw Conveyor Flange</p>	 <p>Screw Conveyor Drive Shafts</p>
--	--	---	--	--	--



WorldWide Electric Corporation is a leading manufacturer of electric motors, motor controls, gear reducers, and generators. Offering fast, often same-day, shipping from seven regional US warehouses, WorldWide Electric takes pride in providing a competitive edge to our customers by responding to their requirements with urgency, technical expertise, and professionalism.

© Copyright 2023 WorldWide Electric Corporation

GR-FHN-v12-01-23